

Modern Classic with Impact



* The picture above may differ from the actual product.



* The picture above may differ from the actual product.



MG/MF 3054 | Matt Marble



MG/MF 125 | Metallic



SG/SF 1140 | Painted Wood



TG/TF 4022 | Soft Matt

You can create a stylish and elegant space with a simple mix match of material and color. If you match the marble with bronze or copper metal in a dark tone color such as dark burgundy, teal green, persian blue, you can create classical yet impressive space.

Natural modern full of warmth



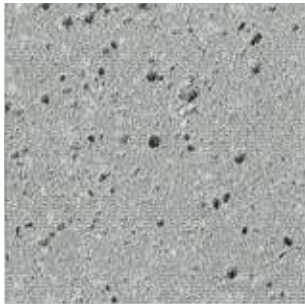
* The picture above may differ from the actual product.



* The picture above may differ from the actual product.



ZG/ZF 5015 | Teak



PG/PF 6010 | Natural Stone



SG/SF 165 | Solid



SG/SF 1139 | Painted Wood

You can create a stylish and elegant space with a simple mix match of material and color. Matching fabrics, furniture and accessories with vibrant colors like pink, blue, and yellow close to the primary color and fresh pastel tones creates a lively and unique space. Add natural wood patterns and live green plants to create a comfortable and warm space.

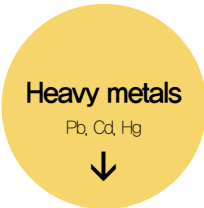
ECO-FRIENDLY FILM

Our interior film is an environment-friendly surface finish that has passed various tests. We are always doing our best for the health and safety of our customers as well as expressing natural and diverse designs.

Eco-friendly material certification



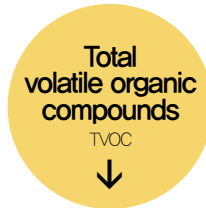
- Heavy metals (lead, cadmium, mercury) and formaldehyde (HCHO) emissions, which are harmful to the human body and known to be the major cause of sick house syndrome, meet the criteria of official agency.
- Minimizes the emission of total volatile organic compounds (TVOC, toluene) that are harmful to the environment.



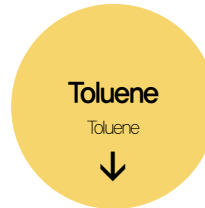
Below standard
(0.5 mg/kg Below)



Below standard
(0.015 mg/m²h Below)



Below standard
(0.4 mg/m²h Below)



Below standard
(0.080 mg/m²h Below)



Use environmentally friendly plasticizer

- It is safe to use environment-friendly plasticizer without using harmful phthalate raw materials.

NON
Phthalate

- DEHP → 0.1 % Below Not detected
- DBP → 0.1 % Below Not detected
- BBP → 0.1 % Below Not detected

Excellent flame retardancy & Safety



- It is a product that passed strict fire-prevention inspection of the FIRE INSTITUTE*. It protects the life and property of customers with excellent flame retardant performance and safety.

Flame
retardant
certification

- Carbonization length → 20cm Below TEST passed
- Carbonization area → 30 cm² Below TEST passed
- Residual fire → 3 second Below TEST passed
- Residual flame → 5 second Below TEST passed
- Smoke density → Max Ds=200 Below TEST passed

SURFEX IN MEDIA

Surfex Interior film is sponsoring various media works to get closer. Now you can find new SURFEX on many media!



SOLID
COLOUR

2019-2020
SURFEX ORIGINAL INTERIOR FILM
NEW COLLECTION

SINGLE COLOUR

Flowers bloom in the space with a variety of colors and various surface textures.



* The above images are for illustrative purposes only and may differ from the actual product.

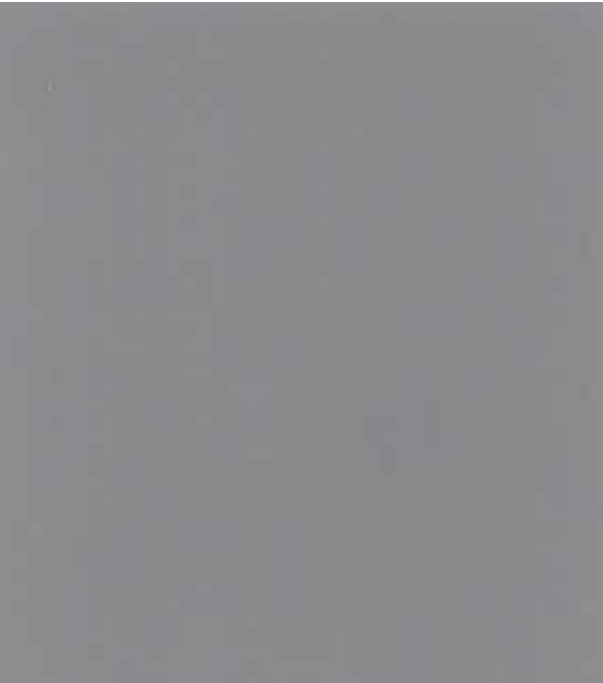
TG/TF 4022



soft matt basic solid painted wood pearl wood

SOFT MATT is a surface special coating that allows smooth texture and luxurious matte finish. It is a premium product that minimizes scratches and maximizes the comfort of a single color through painting techniques.

Touch your fingertips!

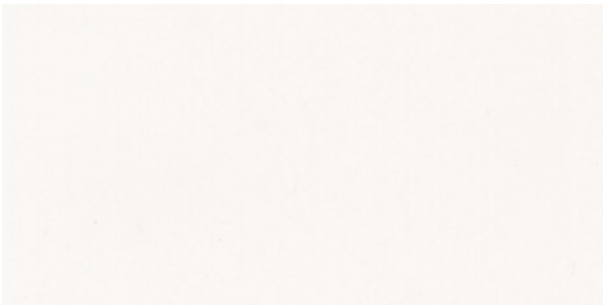


Soft Matt | TG/TF 4019

Touch your fingertips!



Soft Matt | TG/TF 4021



Soft Matt | TG/TF 4018



Soft Matt | TG/TF 4020

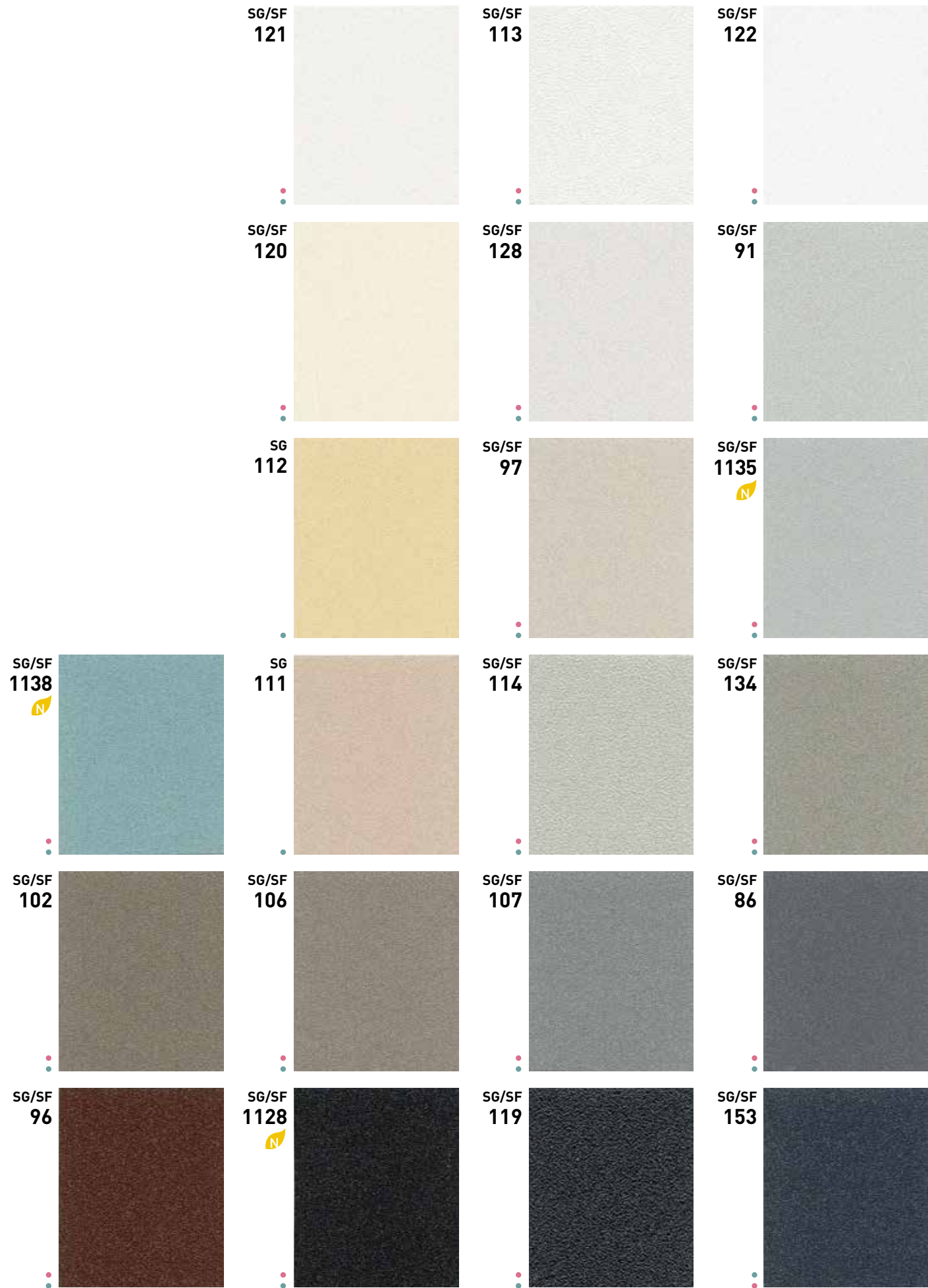


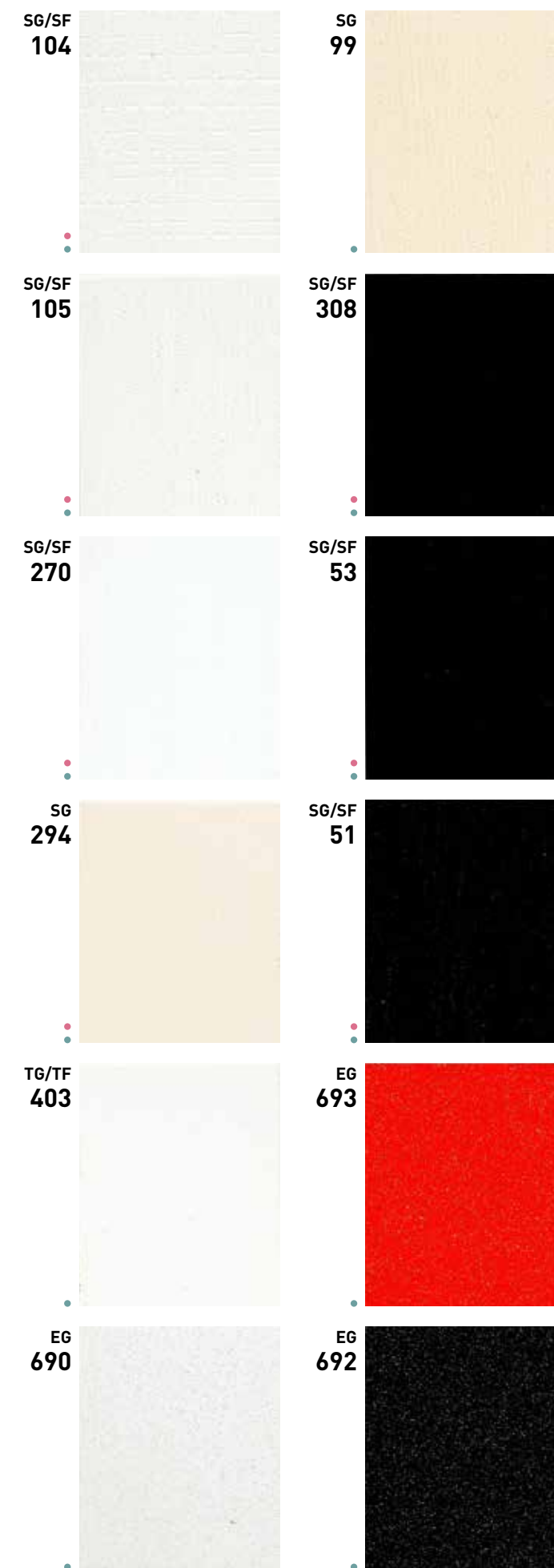
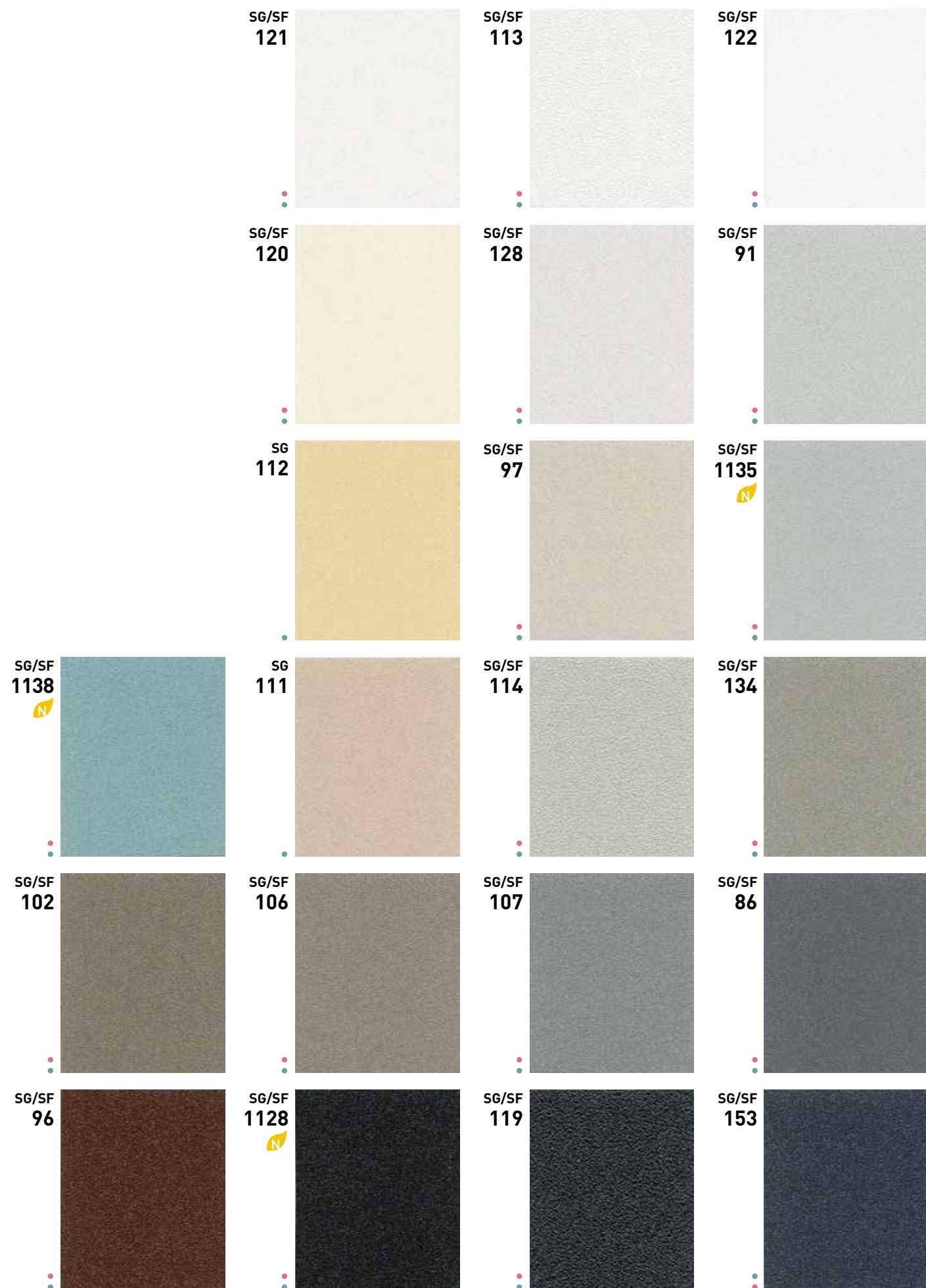
Soft Matt | TG/TF 4022



Soft Matt | TG/TF 4023

** The surface of the product is specially processed, and it has a feeling that it does not stick well when stacked / bent. When pressed enough, the adhesive surface stabilizes with time.





PAINTED WOOD



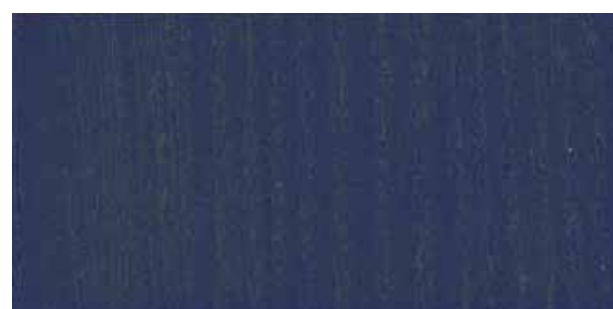
Painted Wood | **SG/SF 1129**



Painted Wood | **SG/SF 1133**



Painted Wood | **SG/SF 1130**



Painted Wood | **SG/SF 1132**



Painted Wood | **SG/SF 1139**



Painted Wood | **SG/SF 1123**



Painted Wood | **SG/SF 1131**



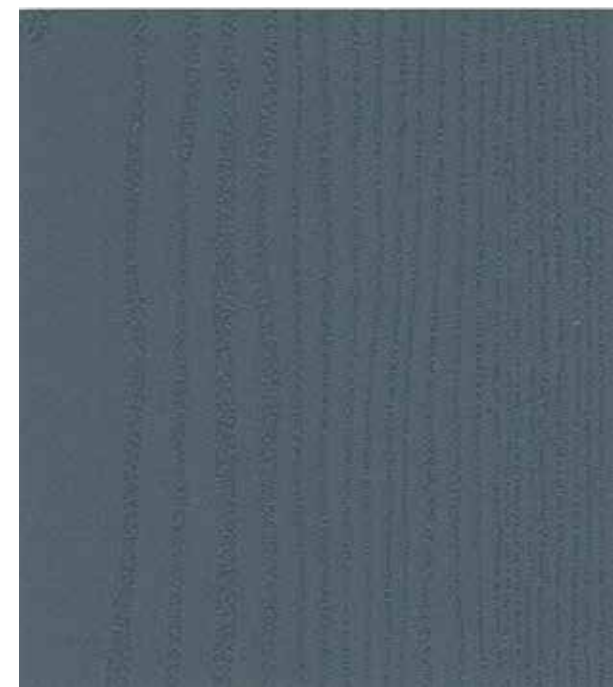
Painted Wood | **SG/SF 1126**

soft matt

basic solid

Painted wood

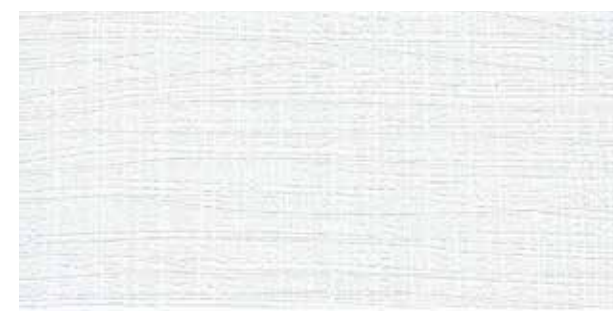
pearl wood



Painted Wood | **SG/SF 1140**



Painted Wood | **SG/SF 1122**



Painted Wood | **NG/NF 2026**



Painted Wood | **NG/NF 2028**



Painted Wood | **SG/SF 1125**



Painted Wood | **SG/SF 1127**

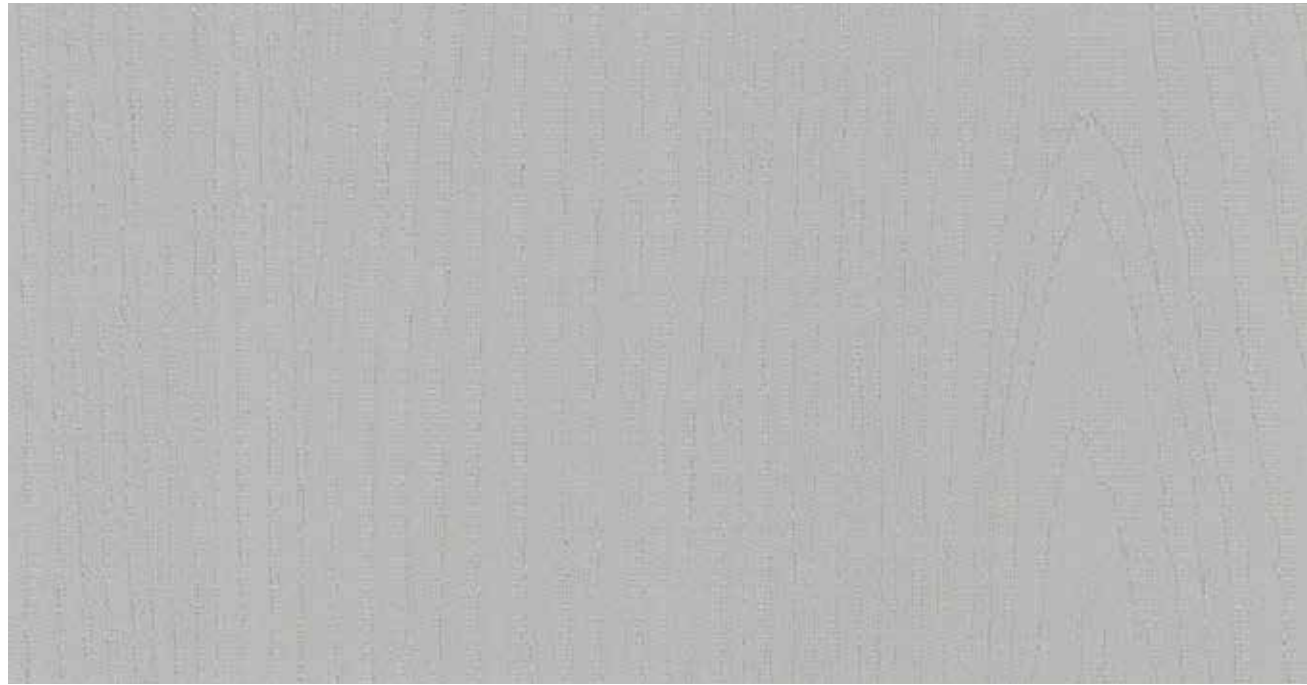


Painted Wood | **SG/SF 1124**



Painted Wood | **NG/NF 2027**

PAINTED WOOD



Painted Wood |

MG/MF 3028



Painted Wood |

MG/MF 3026



Painted Wood |

MG/MF 3029



Painted Wood |

MG/MF 3027



Painted Wood |

MG/MF 3030

soft matt

basic solid

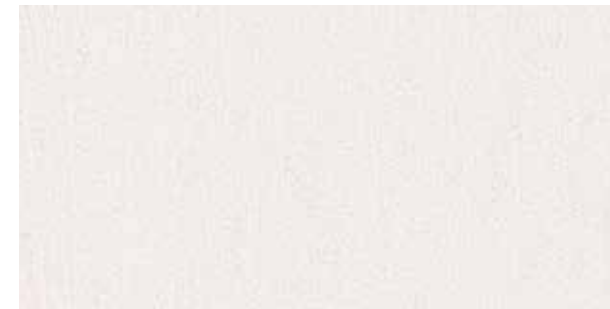
Painted wood

pearl wood



Painted Wood | 페인티드 우

MG/MF 3033



Painted Wood |

MG/MF 3031



Painted Wood |

NG/NF 2017



Painted Wood |

MG/MF 3032



Painted Wood |

NG/NF 2019



Painted Wood |

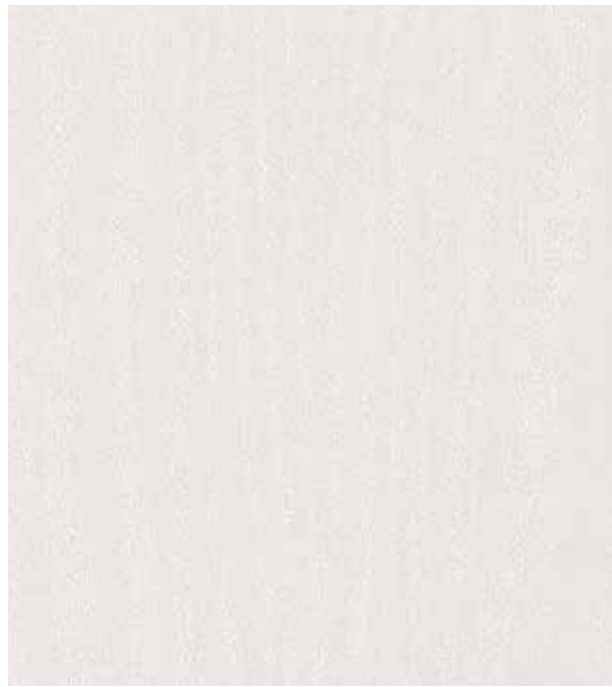
MG/MF 3034



Painted Wood |

NG/NF 2018

PEARL WOOD



Pearl Wood | **MG/MF 3050**



Pearl Wood | **MG/MF 50**



Pearl Wood | **MG 466**



Pearl Wood | **TG 434**



Pearl Wood | **MG/MF 3051**



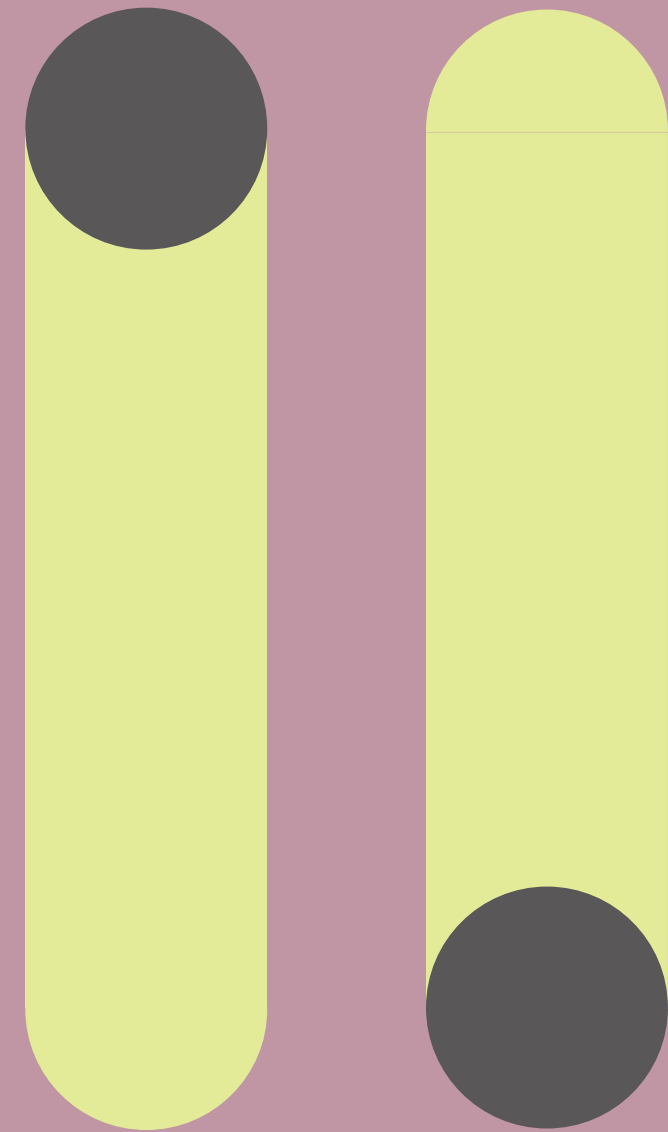
Pearl Wood | **MG/MF 496**



Pearl Wood | **TG 433**



Pearl Wood | **MG/MF 497**



METAL · STONE

SURFEX ORIGINAL INTERIOR FILM
NEW COLLECTION

STONE TONE

A metal material that has a sparkle and gives off a solid shine
With its distinctive luxury, its presence is revived in any space



* The above images are for illustrative purposes only and may differ from the actual product.

PG/PF 6008



STONE TONE

Stone materials with various textures and colors, such as
concrete, brick, and marble, are rough and sometimes gently
show off their weighty presence anywhere.

metallic

concrete

stone wall

marble



Grand Pearl Metal |



PG/PF 6008



Concrete |



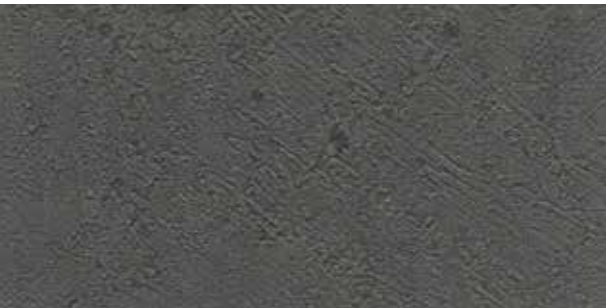
TG/TF 4010



Grand Pearl Metal |



PG/PF 6009



Concrete |



TG/TF 4011



Concrete |

EG 630



Concrete |

EG 631

METALIC



* The above images are for illustrative purposes only and may differ from the actual product.

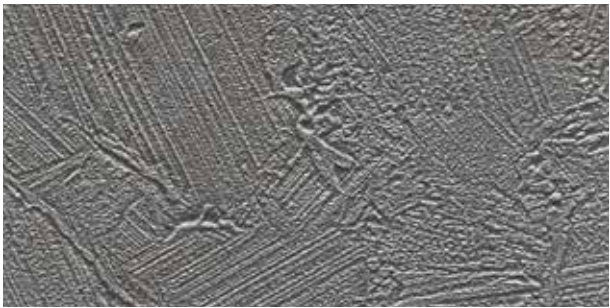
TG/TF 4006



Cement Metal | TG/TF 4008



Cement Metal | TG/TF 4006



Cement Metal | TG/TF 4007

metallic

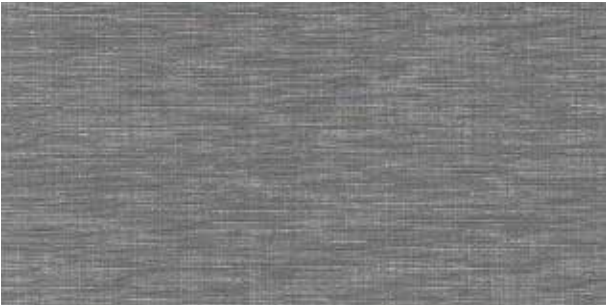
concrete

stone wall

marble



Grand Pearl Metal | EG/EF 6003



Grand Pearl Metal | EG/EF 6000



Grand Pearl Metal | EG/EF 6001



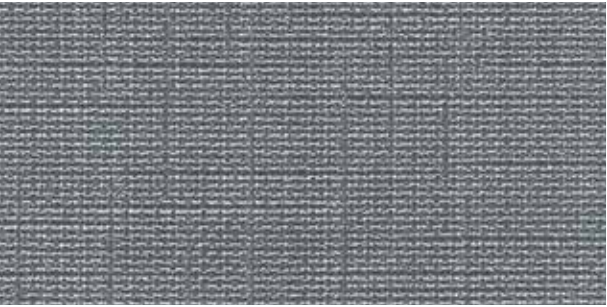
Grand Pearl Metal | EG 6002



Grand Pearl Metal | EG 6004



Grand Pearl Metal | EG/EF 6005



Grand Pearl Metal | EG 6007



Grand Pearl Metal | EG 6006



Grand Pearl Wood | PG/PF 6013

METALIC



MG 3023



MG 498



MG 124



MG/MF 123



MG/MF 3021



MG/MF 3022



MG 129



MG 499



MG/MF 448



MG/MF 125



MG 324



MG/MF 325

metallic

concrete

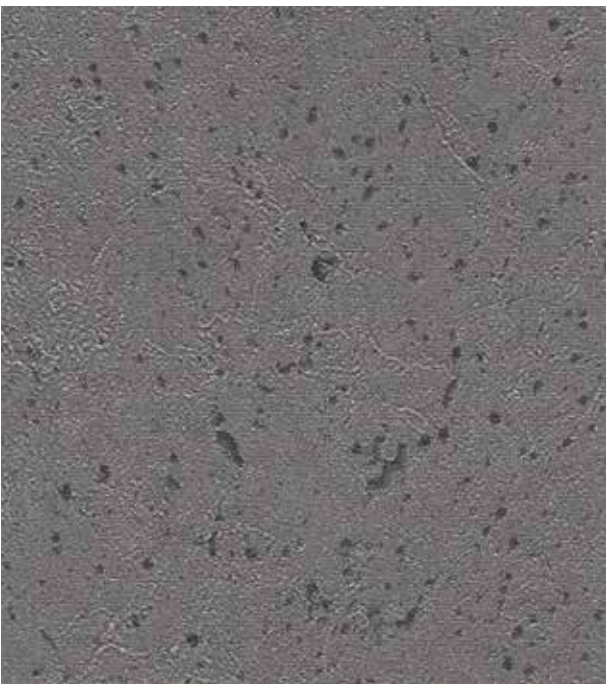
stone wall

marble



* The above images are for illustrative purposes only and may differ from the actual product.

PG/PF 6010



Natural Stone |

PG/PF 6011



Natural Stone |

PG/PF 6010



Natural Stone |

PG/PF 6012

CONCRETE



* The above images are for illustrative purposes only and may differ from the actual product.

MG/MF 3001



Peacock Natural |

MG/MF 3001



Concrete |

MG/MF 451



Peacock Natural |

MG 3003



Concrete |

MG/MF 450

metallic

concrete

stone wall

marble



* 상기 이미지는 이해를 돕기 위한 것으로 실제 제품과 상이할 수 있습니다.

MG/MF 984



Urban Stone |

MG/MF 485



Urban Stone |

MG/MF 487



Concrete |

MG/MF 984



Concrete |

MG/MF 986



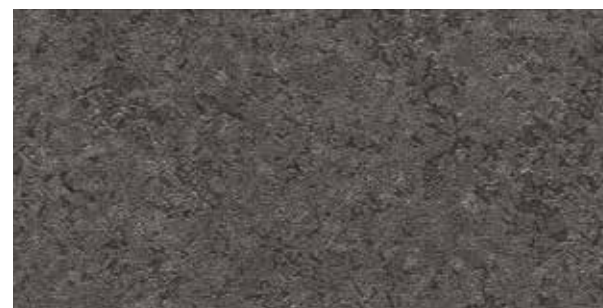
Concrete |

MG/MF 985



Urban Stone |

MG/MF 486



Urban Stone |

MG/MF 488

STONE WALL



* 상기 이미지는 이해를 돕기 위한 것으로 실제 제품과 상이할 수 있습니다.

TG/TF 4014



Real Stone |

TG/TF 4014



Real Stone |

TG/TF 4012



Real Stone |

TG/TF 4013

metallic

concrete

stone wall

marble



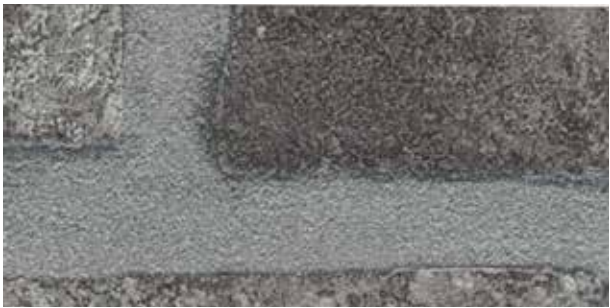
* 상기 이미지는 이해를 돕기 위한 것으로 실제 제품과 상이할 수 있습니다.

NG/NF 968



Bricks |

NG 969



Bricks |

NG/NF 975



Bricks |

NG/NF 968



Matt Marble |

MG/MF 3058



Matt Marble |

MG/MF 3059

MARBLE



MG/MF 462



Rustic Stone | MG/MF 462



Rustic Stone | MG/MF 463



Rustic Stone | MG/MF 461



Sugar Stone | SG 855



Rose Stone | SG 856



Moon Stone | SG/SF 857

metallic concrete stone wall **marble**



* The above images are for illustrative purposes only and may differ from the actual product.

MG/MF 3054



Carrara | MG/MF 3054



Carrara | MG/MF 3055



Carrara | MG/MF 3057



Carrara | MG/MF 3056

MARBLE



MG 445



Marble | TG/TF 425



Marble | PG 932



Marble | MG 398



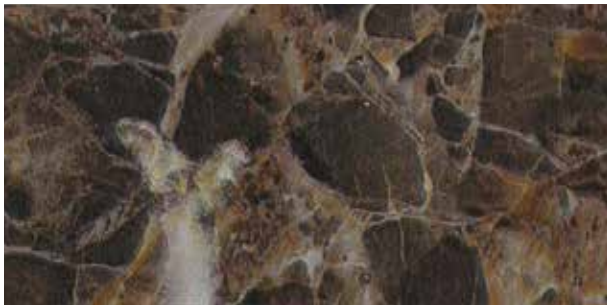
Marble | MG 445



Marble | TG 430



Marble | MG 446



Marble | PG 923

SURFEX ORIGINAL INTERIOR FILM
NEW COLLECTION
FABRIC LEATHER

FABRIC

A warm space is completed by adding various colors to the warm texture of the fabric that you can feel without touching it.



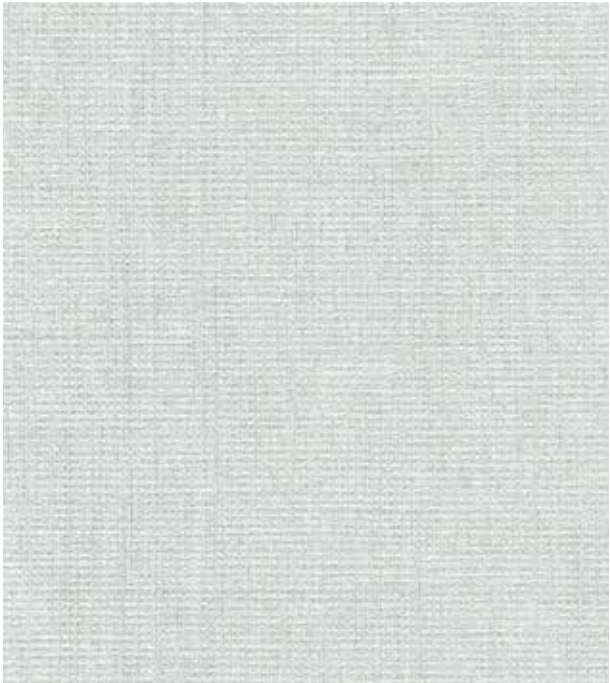
* The above images are for illustrative purposes only and may differ from the actual product.

MG/MF 3060

Leather

The soft texture and three-dimensional effect of natural leather are felt, and a variety of luxurious feelings are implemented to complete a new space.

fabric basic leather premium leather



Linen | MG/MF 3060



Linen | MG/MF 3061



Linen | MG/MF 3062



Fabric | MG/MF 453



Fabric | MG/MF 454



Fabric | MG/MF 452

FABRIC



* 상기 이미지는 이해를 돕기 위한 것으로 실제 제품과 상이할 수 있습니다.

TG/TF 4000



Tweed |

TG/TF 4000



Tweed |

TG 4001



Tweed |

TG/TF 4002



Natural Fabric |

MG/MF 455



Natural Fabric |

MG/MF 456



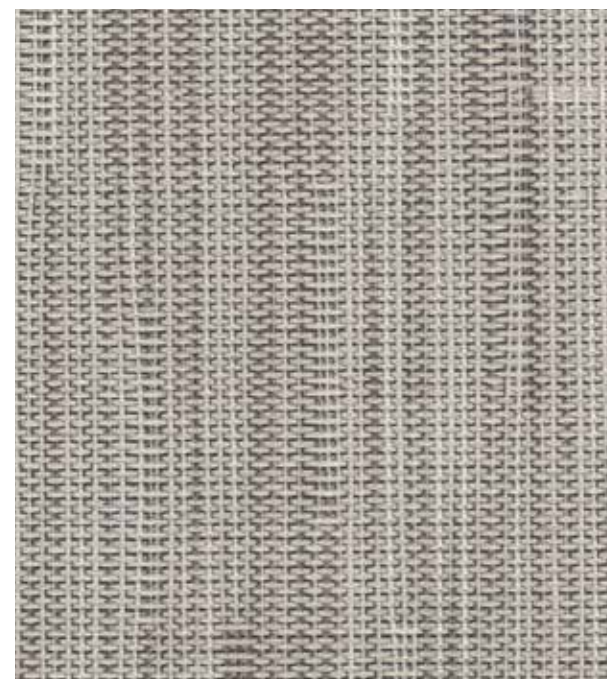
Natural Fabric |

MG/MF 457

fabric

basic leather

premium leather



Fabric |

MG/MF 3019



Traditional Paper |

MG/MF 3013



Traditional Paper |

MG 3014



Fabric |

MG 3025



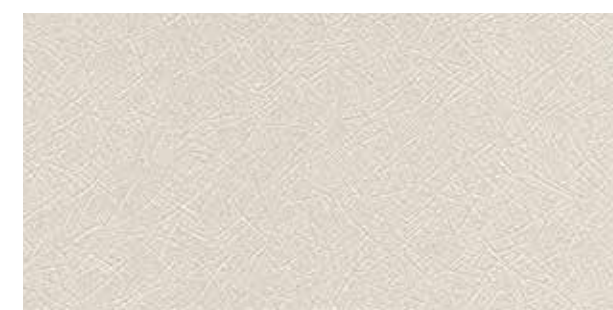
Pearl Mesh |

MG 436



Fabric |

MG 3024



Texture Metal |

MG 489

FABRIC



* The above images are for illustrative purposes only and may differ from the actual product.

TG 4003



Metal Leaf |

TG 4003



Stripe Puzzle |

MG 352



Metal Leaf |

TG/TF 4004



String Wood | 스트링 우드

PG/PF 934

fabric

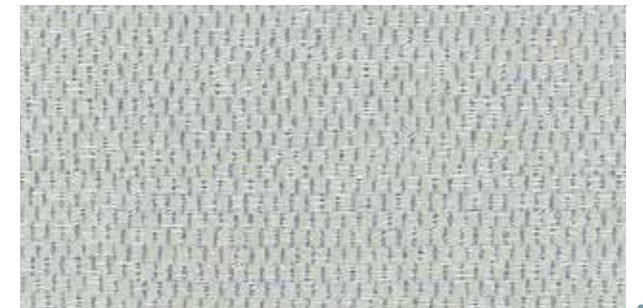
basic leather

premium leather



Lotos Flower |

EG 592



Metal Tweed |

JG 7000



Luxury Metal |

TG 464



Metal Tweed |

JG 7001



Metal Fabric |

JG 694



Artificial Wood |

PG/PF 929



Luxury Metal |

JG 696



Artificial Wood |

PG 930



Luxury Metal |

TG/TF 465



Luxury Metal |

JG 698

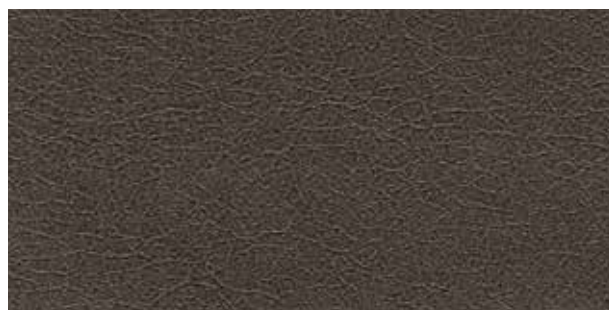
BASIC LEATHER



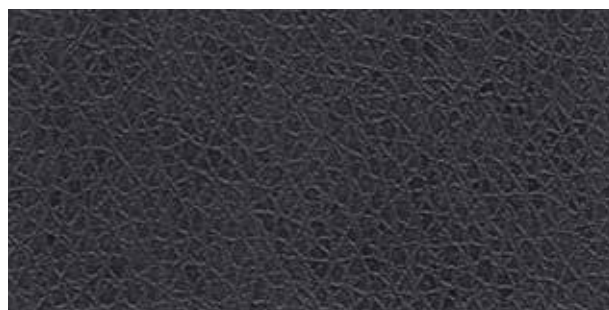
Leather | **TG/TF 4016**



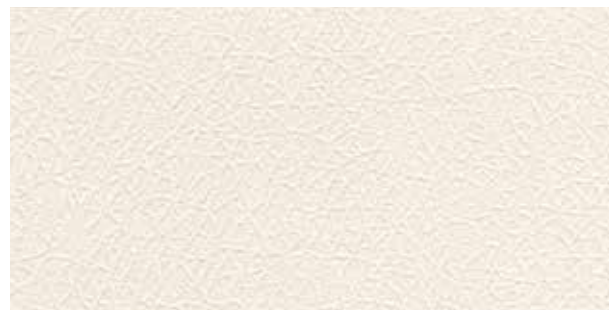
Basic | **MG/MF 458**



Basic | **MG/MF 460**



Leather | **TG/TF 410**



Leather | **TG/TF 4015**



Leather | **TG/TF 4017**



Suede | **SW 1020**



Suede | **SW 1021**

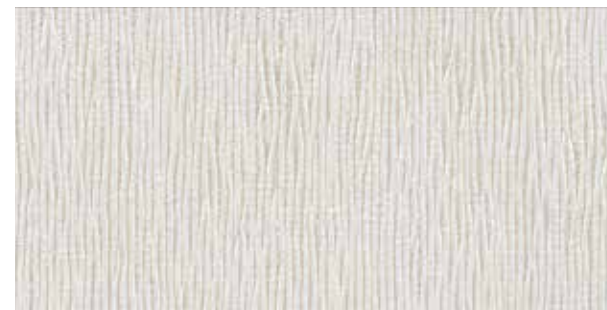


Suede | **SW 1023**

fabric

basic leather

premium leather



Engraving | **SC 790**



Engraving | **SC 791**



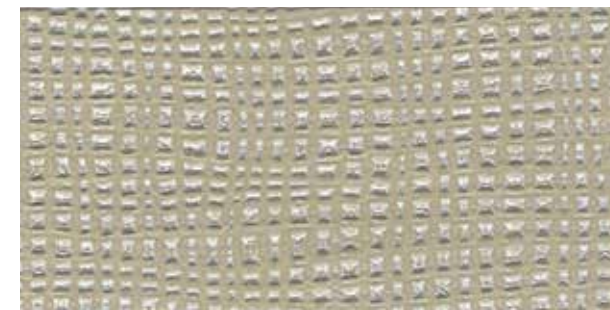
Engraving | **SC 774**



Engraving | **SC 775**



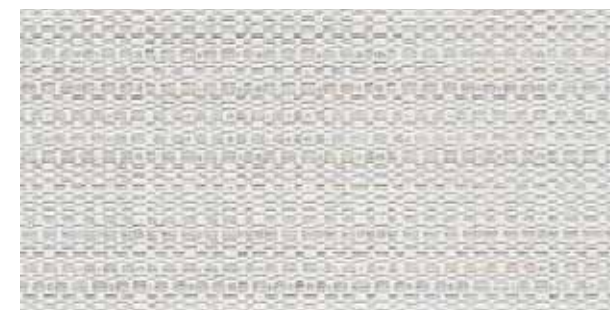
Engraving | **SC 776**



Fabric | **SC 792**



Fabric | **SC 793**



Weave | **SC 786**



Vintage Wood | **SC 757**



Vintage Wood | **SC 756**

PREMIUM LEATHER



Bead Work |

SE 809



Anaconda |

SP 840



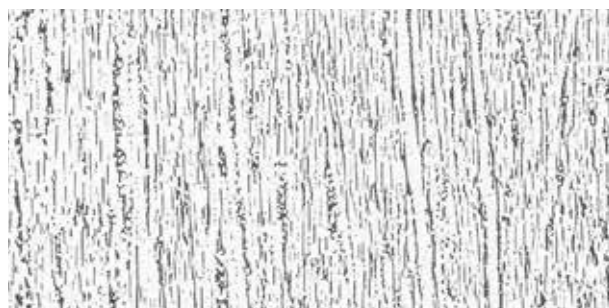
Square |

SE 806



Rock |

SP 830



Multi Wood |

SE 801



Cross Stripe |

SC 761



Pebble |

SC 788



Crocodile |

SC 715

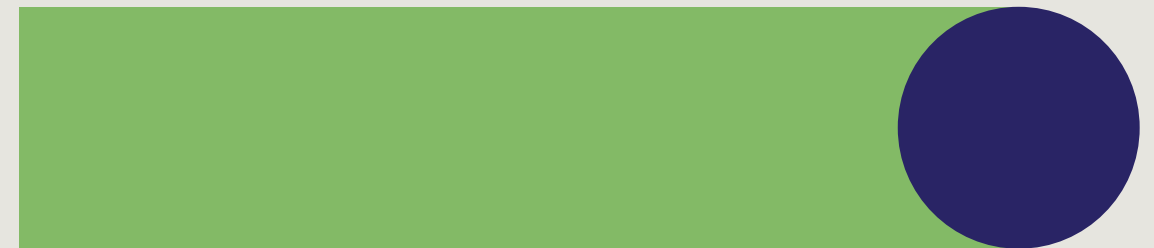
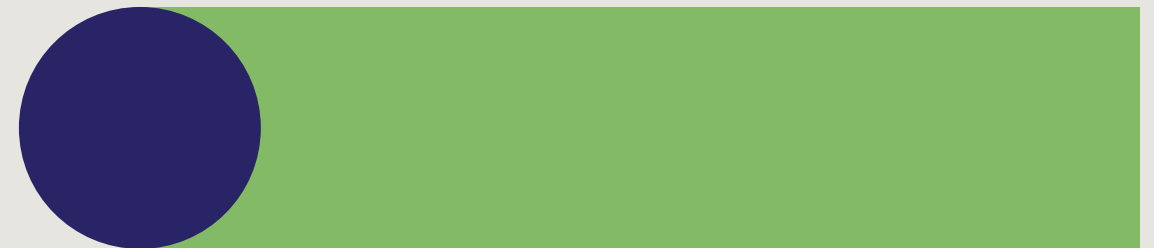
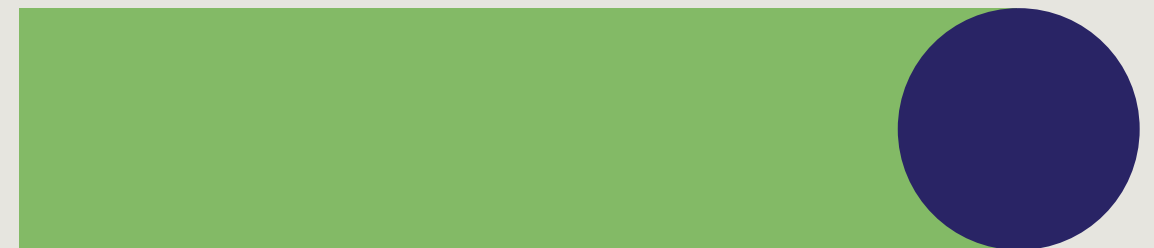


Cross Stripe |

SC 725

SURFEX ORIGINAL INTERIOR FILM
NEW COLLECTION

WOOD



WOOD

The comfort and warmth of nature cannot be replaced by any material.



* The above images are for illustrative purposes only and may differ from the actual product.

 ZG/ZF 5015

multi printing wood

newer wood

wood series

Multi-printing is a high-quality premium product that adds a three-dimensional effect through a special printing method.

**** Depending on the viewing angle, the pattern looks different and you can feel the texture of the deep veneer.**



Teak |

 ZG/ZF 5015



Ash |

 ZG/ZF 5025



Teak |

 ZG/ZF 5016



Ash |

 ZG/ZF 5023



Teak |

 ZG/ZF 5017



Ash |

 ZG/ZF 5024

MULTI PRINTING WOOD



Multi Print Wood | ZG/ZF 5008



Multi Print Wood | ZG/ZF 5007



Multi Print Wood | ZG/ZF 5003



Multi Print Wood | ZG/ZF 5004



Multi Print Wood | ZG/ZF 5000



Multi Print Wood | ZG/ZF 5001



Multi Print Wood | ZG/ZF 5006



Multi Print Wood | ZG/ZF 5002



Multi Print Wood | ZG/ZF 5005

multi printing wood newer wood wood series



* The above images are for illustrative purposes only and may differ from the actual product. ZG/ZF 5012



Vintage Oak | ZG/ZF 5013



Vintage Oak | ZG/ZF 5012



Vintage Oak | ZG/ZF 5014

MULTI PRINTING WOOD



*The above images are for illustrative purposes only and may differ from the actual product.

 **ZG/ZF 5019**



Oak |

 **ZG/ZF 5018**



Oak |

 **ZG/ZF 5019**



Maple |

 **ZG/ZF 5026**



*The above images are for illustrative purposes only and may differ from the actual product.

 **ZG/ZF 5009**



Vintage Oak |

 **ZG/ZF 5009**



Vintage Oak |

 **ZG/ZF 5010**



Vintage Oak |

 **ZG/ZF 5011**

NEWER WOOD



Oak |  **ZG/ZF 5022**



Oak |  **ZG/ZF 5021**



Oak |  **ZG/ZF 5020**



Oak |  **ZG/ZF 5027**



 **ZG/ZF 5027**

multi printing wood

newer wood

wood series



Wizard Grain |  **MG/MF 3064**



Wizard Grain |  **MG/MF 3065**



Wizard Grain |  **MG/MF 3066**



 **MG/MF 3064**

MULTI PRINTING WOOD



*The above images are for illustrative purposes only and may differ from the actual product.

MG/MF 3069



Pine | MG/MF 3069



Oak | MG/MF 3067



Oak | MG/MF 3068



Pine | MG/MF 3070



Zebrano | MG/MF 3063

multi printing wood

newer wood

wood series



Ash | SG/SF 1144



Ash | SG/SF 1145



Style Bamboo | TG/TF 4005



Style Bamboo | NG/NF 2024



Style Bamboo | NG/NF 2025



SG/SF 1144



Anegre | SG/SF 1143



Zebrano | SG/SF 1142

WOOD SERIES



* The above images are for illustrative purposes only and may differ from the actual product.

SG/SF 1112



Ash |

SG/SF 1110



Ash |

SG/SF 1119



Ash |

SG/SF 1111



Acacia |

SG/SF 12



Ash |

SG/SF 1112

multi printing wood

newer wood

wood series



Elm |

SG/SF 81



Ash |

SG/SF 179



Pine |

SG/SF 142



Ash |

SG/SF 57



Ash |

SG 140



Washed Oak |

SG/SF 1113



Oak |

SG/SF 54



Antique Wood |

SG/SF 1108



Oak |

SG/SF 55



Teak |

SG/SF 249

WOOD SERIES



* The above images are for illustrative purposes only and may differ from the actual product.

SG/SF 178



Ash | SG/SF 178



Antique Wood | SG/SF 1107



Ash | SG/SF 1100

multi printing wood

newer wood

wood series



Ivy | SG/SF 209



Ivy | SG/SF 211



Oak | SG/SF 171



Pine | SG 143



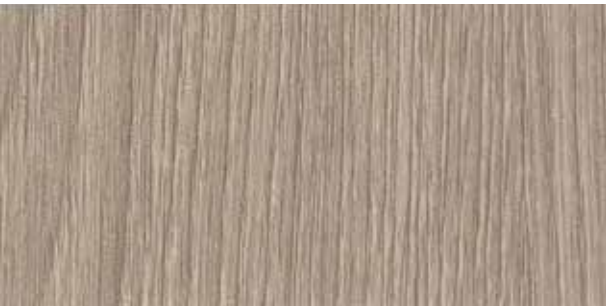
Antique Oak | SG 133



Oak | SG/SF 361



Luxury Metal | SG 851



Oak | SG/SF 56



Washed Oak | SG/SF 1115



Oak | SG 188

WOOD SERIES

multi printing wood newer wood **wood series**



* The above images are for illustrative purposes only and may differ from the actual product.

SG/SF 29



SG/SF 1104



SG/SF 291



French Oak | **SG/SF 29**



French Oak | **SG/SF 853**



French Oak | **SG/SF 30**



Ash | **SG/SF 1104**



Larch | **SG/SF 291**



Larch | **SG 292**



Larch | **SG 293**

WOOD SERIES



* The above images are for illustrative purposes only and may differ from the actual product.

SG/SF 167



Oak | SG/SF 187



Ivy | SG/SF 210



Oak | SG/SF 41



Sonoma Oak | SG/SF168



Ash | SG/SF 37



Sonoma Oak | SG/SF 167

multi printing wood

newer wood

wood series



Teak | SG 15



Maple | SG/SF 1120



Oak | SG/SF 151



Cherry | SG/SF 1118



Ash | SG/SF 177



Oak | SG/SF 40



Washed Oak | SG/SF 1114



Oak | SG/SF 82



Ash | SG 1105

WOOD SERIES



* The above images are for illustrative purposes only and may differ from the actual product.

SG/SF 1101



Cherry | SG/SF 1117



Ash | SG/SF 1101



Ash | SG/SF 1102



Ash | SG/SF 176



Maple | SG/SF 20

multi printing wood

newer wood

wood series



Maple | SG 69



Ash | SG/SF 181



Compile Wood | SG/SF 282



Ash | SG/SF 183



Teak | SG 16



Pine | SG/SF 144



Maple | SG/SF 43



Oak | SG/SF 98



Ash | SG/SF 58

WOOD SERIES



Ash | **SG/SF 38**



Oak | **SG/SF 34**



Maple | **SG/SF 42**



Acacia | **SG/SF 10**



Acacia | **SG/SF 186**



Teak | **SG/SF 09**



Ash | **SG/SF 141**



Oak | **SG/SF 189**



Oak | **SG/SF 170**



Elm | **SG/SF 199**

multi printing wood

newer wood

wood series



Oak | **SG/SF 190**



Maple | **SG/SF 363**



Castagno Oak | **SG/SF 381**



Oak | **SG/SF 169**



Pine | **SG/SF 44**



Akagashi | **SG/SF 237**



Maple | **SG/SF 251**



Teak | **SG/SF 08**



Castagno Oak | **SG/SF 382**



Teak | **SG/SF 35**

WOOD SERIES



Cherry | **SG/SF B1**



Cherry | **SG/SF 26**



Cherry | **SG/SF 23**



Cherry | **SG/SF 31**



Cherry | **SG 854**



Cherry | **SG/SF 101**



Castagno Oak | **SG/SF 383**



Cherry | **SG/SF 28**



Walnut | **SG/SF 89**



Sapele | **SG/SF 90**

multi printing wood

newer wood

wood series



Teak | **SG/SF 17**



Compile Wood | **SG/SF 283**



Ash | **SG/SF 25**



Compile Wood | **SG/SF 148**



Ash | **SG/SF 1103**



Oak | **SG/SF 245**



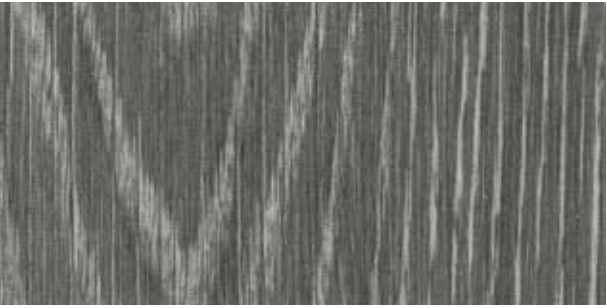
Montaigne Walnut | **SG 385**



Antique Oak | **SG/SF 228**



Antique Oak | **SG/SF 230**



Ash | **SG/SF 39**

WOOD SERIES



* The above images are for illustrative purposes only and may differ from the actual product.

SG/SF 1116



Sapele |

SG/SF 243



Washed Oak |

SG/SF 1116



Walnut |

SG/SF 149



Ash |

SG/SF 1106



Teak |

SG/SF 36



Walnut |

SG/SF 278

multi printing wood

newer wood

wood series



* The above images are for illustrative purposes only and may differ from the actual product.

SG/SF 1109



Walnut |

SG/SF 61



Antique Wood |

SG/SF 1109



Ash |

SG/SF 164



Compile Wood |

SG/SF 852



Ash |

SG/SF 59



Black Wood |

SG/SF 52

WOOD SERIES



NG/NF 2001

* The above images are for illustrative purposes only and may differ from the actual product.



White Ash | NG/NF 2001



Pearl Ash | NG/NF 2010



Oak | NG 2006



White Ash | NG 2000



Ash | NG/NF 2012

multi printing wood

newer wood

wood series



String Wood | NG/NF 402



Pearl Ash | NG/NF 2009



Sycamore | NG/NF 158



Maple | NG 2023



Elm | NG 217



Birch | NG 226



Stripe Wood | NG/NF 326



Oak | NG 206



Pearl Ash | NG 396



Elm | NG/NF 202

WOOD SERIES



White Pearl Wood | **NG/NF 374**



Cherry | **NG/NF 390**



Pear | **NG 223**



Vilora | **NG 287**



Elm | **NG 01**



Sycamore | **NG 977**



Elm | **NG/NF 335**



Oak | **NG 264**



Oak | **NG/NF 970**



Pine | **NG/NF 2015**

multi printing wood

newer wood

wood series



Oak | **NG/NF 960**



Oak | **NG/NF 265**



Natural Beige | **NG/NF 494**



Maple | **NG/NF 388**



Vilora | **NG/NF 284**



NG/NF 960



Elm | **NG 203**



Oak | **NG/NF 207**

WOOD SERIES



Maple | **NG 387**



Pear | **NG/NF 250**



Oak | **NG/NF 2008**



Elm | **NG 218**



Cherry | **NG/NF 392**



Birch | **NG/NF 225**



Oak | **NG/NF 163**



Maple | **NG/NF 349**



Oak | **NG/NF 971**



Walnut | **NG/NF 227**

multi printing wood

newer wood

wood series



* The above images are for illustrative purposes only and may differ from the actual product.

NG/NF 2020



Oak | **NG/NF 2020**



Oak | **NG/NF 2021**



Oak | **NG/NF 2022**

WOOD SERIES



* The above images are for illustrative purposes only and may differ from the actual product.

NG 2014



Multi Wood | NG/NF 253



Multi Wood | NG 2014



Multi Wood | NG/NF 256



Oak | NG 961



Noce | 노체 NG 155



Black Cherry | NG 409

multi printing wood newer wood wood series



NG/NF 400



Antique Pine | NG 300



Antique Pine | NG/NF 400



Antique Pine | NG/NF 301



Antique Pine | NG/NF 216



Noce | NG/NF 04



Noce | NG/NF 03



Ebony | NG/NF 376

WOOD SERIES



Antique Pine | **NG 2005**



Teak | **NG 372**



Walnut | **NG/NF 267**



Oak | **NG/NF 962**



Coconut | **NG/NF 340**



Elm | **NG 221**



Antique Pine | **NG 2004**



Oak | **NG/NF 266**



Pine | **NG/NF 2016**



Walnut | **NG 268**

multi printing wood

newer wood

wood series



Elm | **NG/NF 336**



Antique Teak | **NG/NF 493**



Stripe Wood | **NG 405**



Stripe Wood | **NG/NF 406**



Coconut | **NG/NF 339**



Oak | **PG/PF 903**



Oak | **PG/PF 904**



Golden Teak | **PG/PF 940**

WOOD SERIES



* The above images are for illustrative purposes only and may differ from the actual product.

MG 3005



Ash |

MG 3004



Ash |

MG 480



Ash |

MG 3005



Ash |

MG 481



Ash |

MG/MF 3006



Ash |

MG/MF 482

multi printing wood

newer wood

wood series



* The above images are for illustrative purposes only and may differ from the actual product.

MG/MF 3012



Primary Oak |

MG/MF 3007



Ash |

MG/MF 3012



Bao |

MG 484



Primary Oak |

MG/MF 3008



surfex

Our manufacturer is the best pvc film manufacturers to produce as finishes, outstanding design, and equipped with a variety of patterns and colors, and our customers want to choose the best possible quality of working. In particular, I think that the environment-friendly products and people leave in research and development are positioned.



APPLYING NOTICE

Notice on applying film

1 Preparatory work

1. Check the type and surface condition of the film on which the film is to be installed, and check the problem areas before and after applying.
 - **MDF** : Due to the difference in applying adhesion and flame retardancy depending on density and surface condition, use MDF with uniform density.
 - **Iron plate (aluminum, iron, etc.)** : After removing the contaminants such as oil on the surface with solvent such as alcohol, check the damage on the surface caused by the solvent, treat the irregularities and welds with putty, polish the surface with sandpaper, remove the foreign matters with dust brush.
 - **Ready-made products** : Depending on the surface condition, the primer must be used to prevent shrinkage and dropout, and the adhered surface must be checked.
2. Before the applying, the customer should check the product selection (product name, pattern, appearance, flame retardancy) beforehand.
3. Film applying should be carried out after consultation with the painting/coating and painting/coating process after carpentry.
4. To ensure a stable working environment, check the humidity of the working site and keep the room temperature at room temperature (15 °C ~ 25 °C) as possible.
5. The section (cut) of the adherend (MDF etc.) where the film is to be applied should be polished with sandpaper.
Especially, in the case of wood, if the surface condition of the bent part and the edge part is rough, it should be polished with sand paper or putty treated.

2 Primer treatment

1. Apply primer 1–2 times on the surface of wood (MDF, PB, etc.).
2. Since the cut surface of the wood has a high water absorption rate and the surface is uneven, it is necessary to apply the primer 2–3 times sufficiently.
3. It should be dried for at least 2 hours after application is complete. Especially in wet areas, it takes more time to dry.

3 Applying method

1. Once the primer coating is fully dry, polish the surface and section with sandpaper and remove the foreign material with a duster or brush.
2. **It may cause color difference between product LOT. Therefore, check product LOT in advance.**
3. The adhesive side of the interior film should be sanded, and we recommend using primer to reinforce adhesion.
4. Use Felt or Applicator to rub the surface thoroughly to ensure that it is fully adhered. If it is a single section, it should be squeezed with a strong force 2 or 3 times.
5. Interior film may cause shrinkage due to heat or shrinkage of MDF.

4 Specific Product Applying Precautions

1. SC/SE (Artificial leather type) SW (Suede type)
 - **Do not apply overlapped applying because there is a risk of peeling due to embossing depth and surface treatment layer during overlapping construction. In case of unavoidable overlapped construction, it is necessary to apply after oily primer treatment to prevent floating phenomenon. (We are not responsible for any defects caused by overlapping apply)**
 - Since the surface area of the product is weak, rubbing strongly during construction may damage the surface.
 - In order to maximize the visual effect of the product, it is necessary to check the type and condition of the adhering material beforehand and to remove the foreign substance and decontamination of the adhesive surface. Otherwise, it may cause deterioration of applying and deterioration of visual effects.
2. SP
 - Due to the design effect, the surface area is soft, so be careful when rubbing strongly on the surface as it may damage the surface.
3. JG/JF
 - It is a special product method using aluminum. It may cause peeling of surface layer due to desorption of film between overlapping applied parts.
4. TG4018~TG4023 (Soft Matt)
 - **The surface of the product is specially processed, and it has a feeling that it does not stick well when stacked / bent, When pressed enough, the adhesive surface stabilizes with time.**

5 Product storage and cautions

1. Avoid moisture and direct sunlight, and do not use it outdoors.
2. The surface may be discolored when exposed to sunlight or ultraviolet rays for a long time.
3. If the product is stored for a long time after unpacking, it may cause cracks on the surface of the product and adherence may be weakened.
4. When applying film, primer must use SOIF specific primer.
5. **The color of the film may vary slightly depending on the production date.**

※ Unauthorized copying or use of the contents of this sample book is prohibited.
※ **The color of the products listed may have differences from the actual product.**
※ **Please check the color after the color difference between the product LOT may occur.**

SURFEX INTERIOR FILM LIMITED
152-160 City Road, London EC1V 2NX
E-MAIL : hello@surfexfilm.com